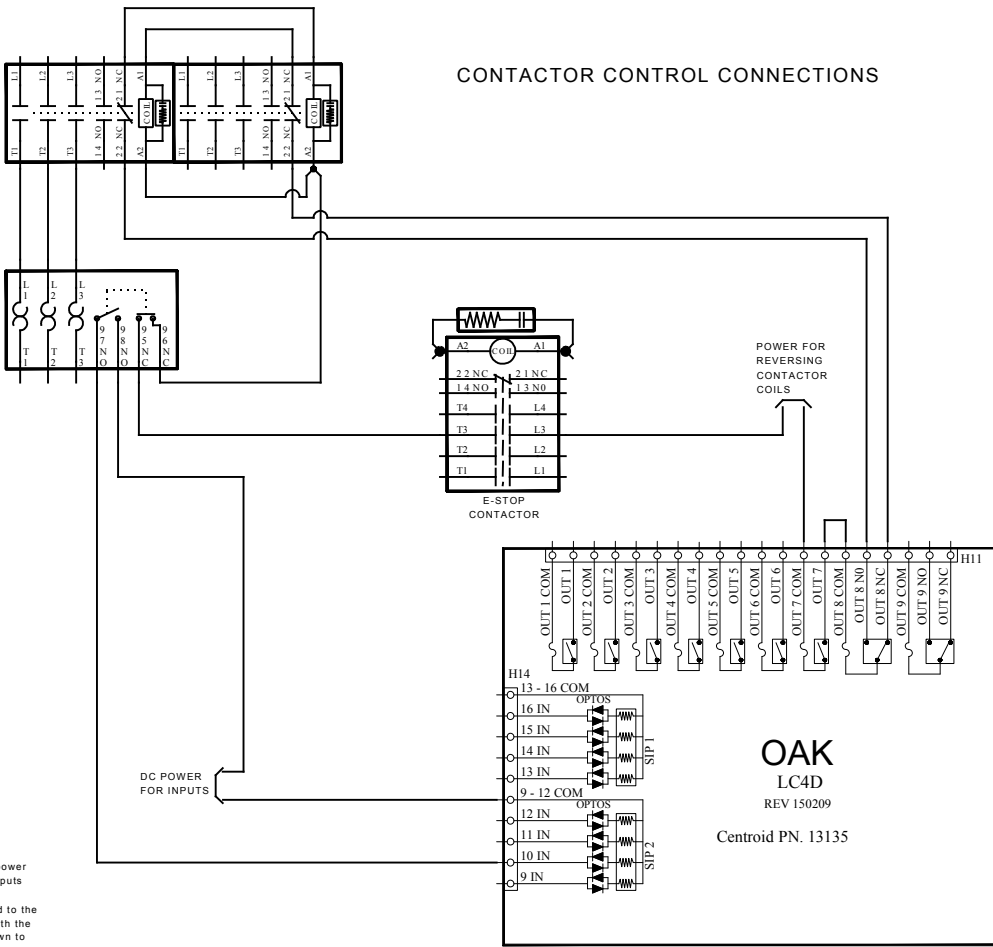


A

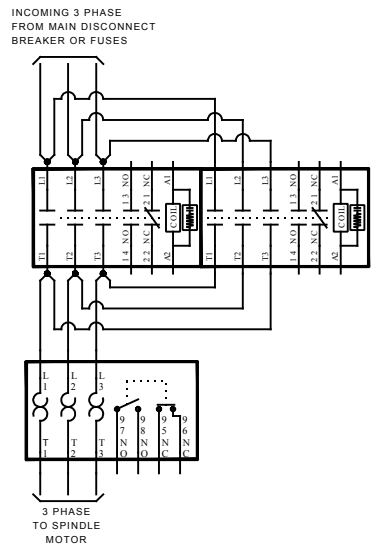
B

C

D



**CONTACTOR POWER CONNECTIONS**



See manual for power connection of inputs

+12VDC Connected to the input commons with the inputs pulled down to 12vdc common is standard

For 5 and 12VDC inputs the power supply for the ALLIN1DC drive can be used

For 24VDC inputs a separate power supply must be used.

Title	BOARD LEVEL, OAK, SPINDLE CONTACTOR CIRCUIT	
Size	Number	Rev
B		A
Date	150812	Drawn by 391 DRS
File name	OAK SPINDLE CONTACTOR.dwg	Sheet 1 of 1

A

B

C

D