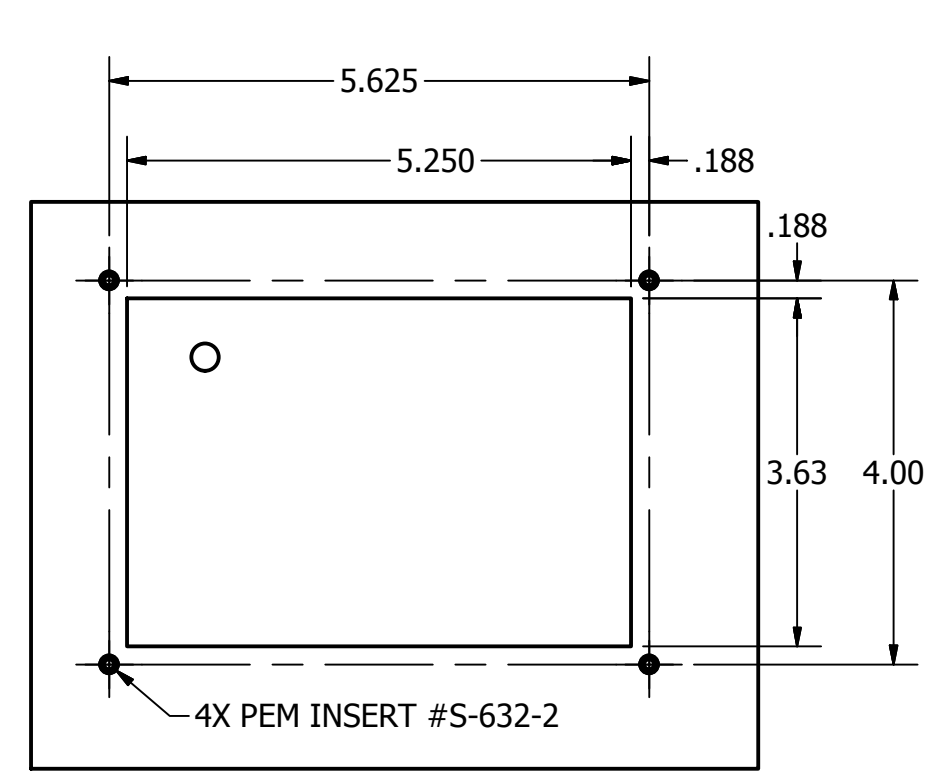
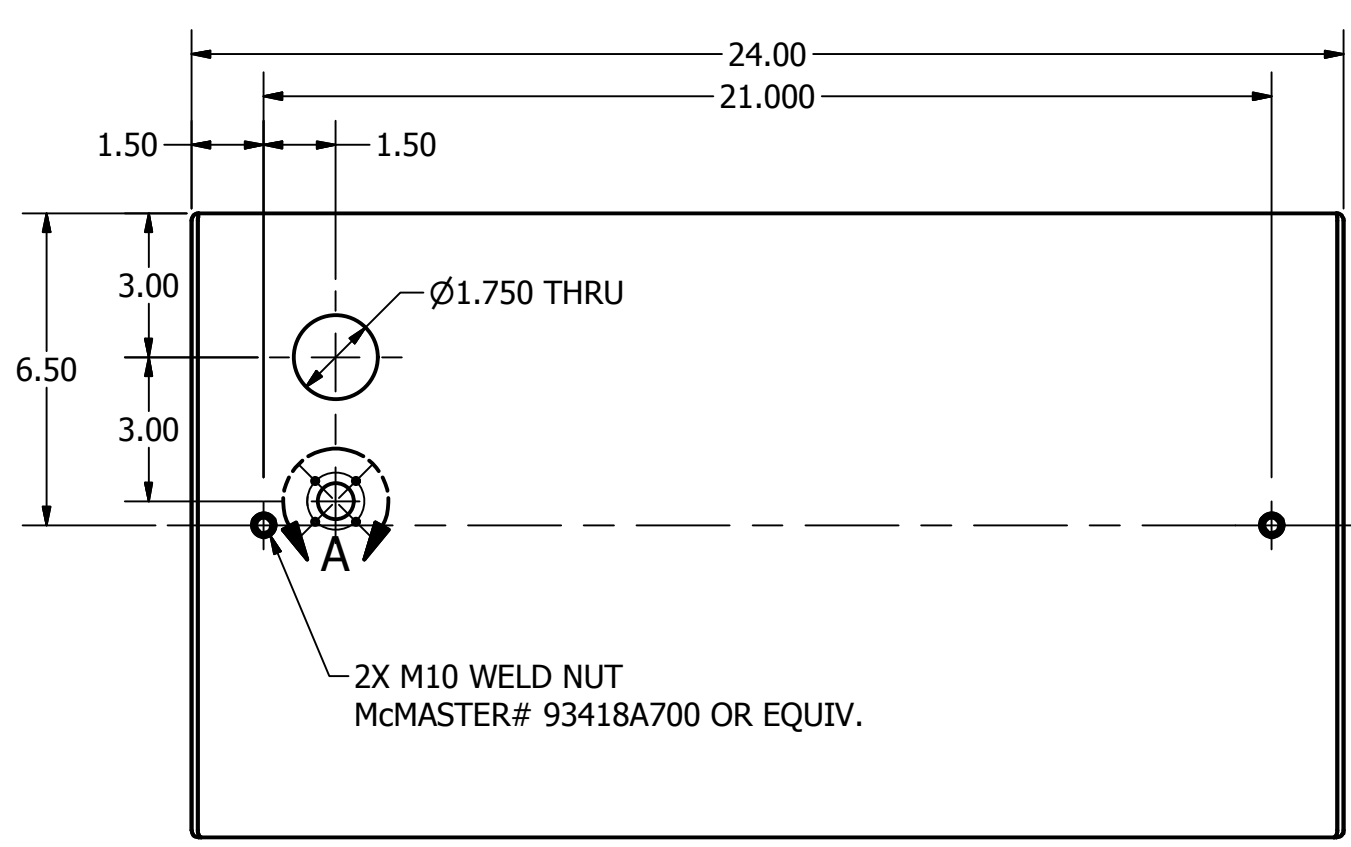
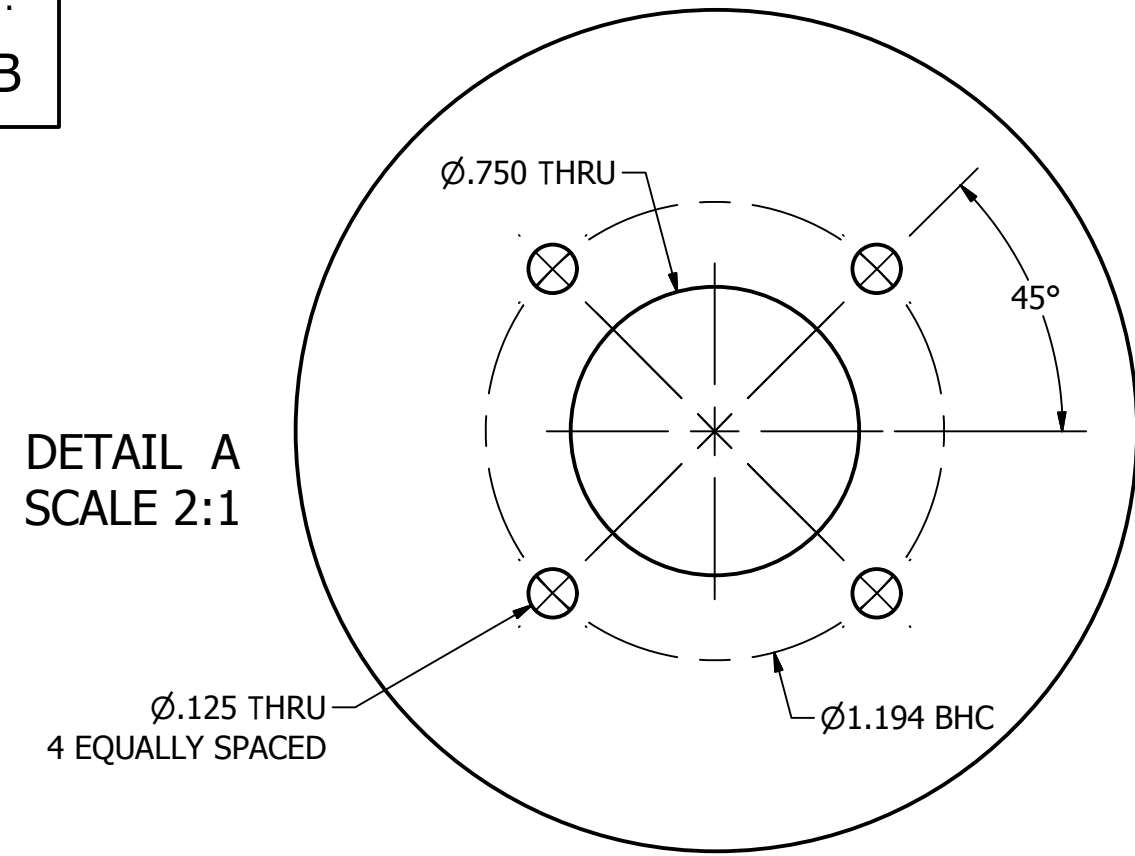
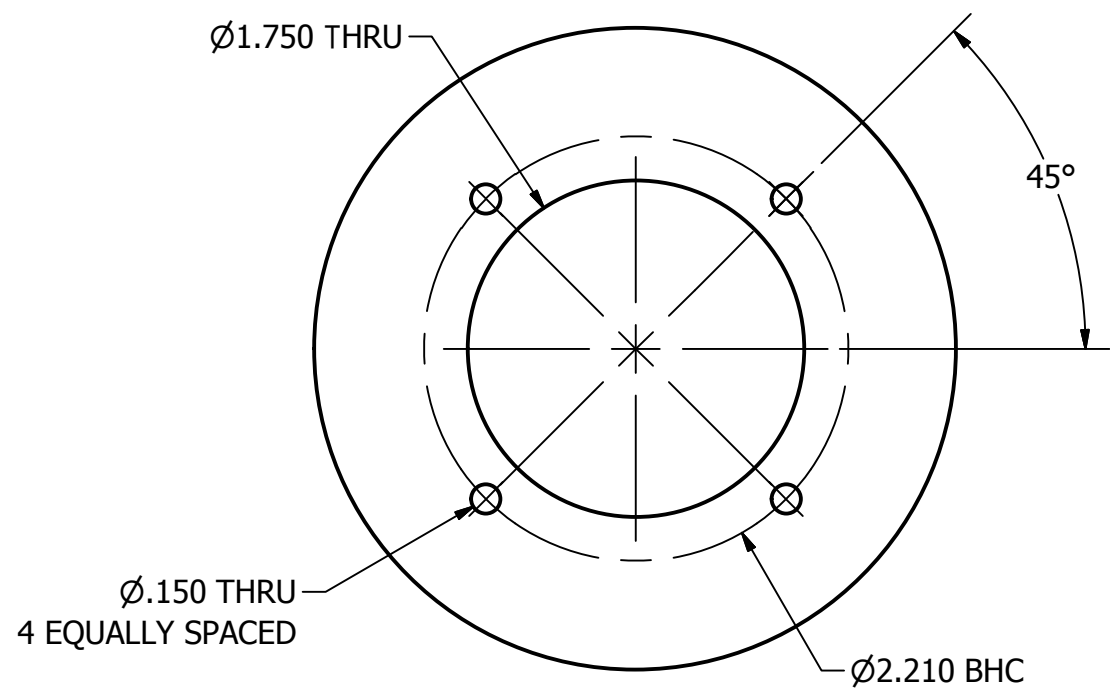
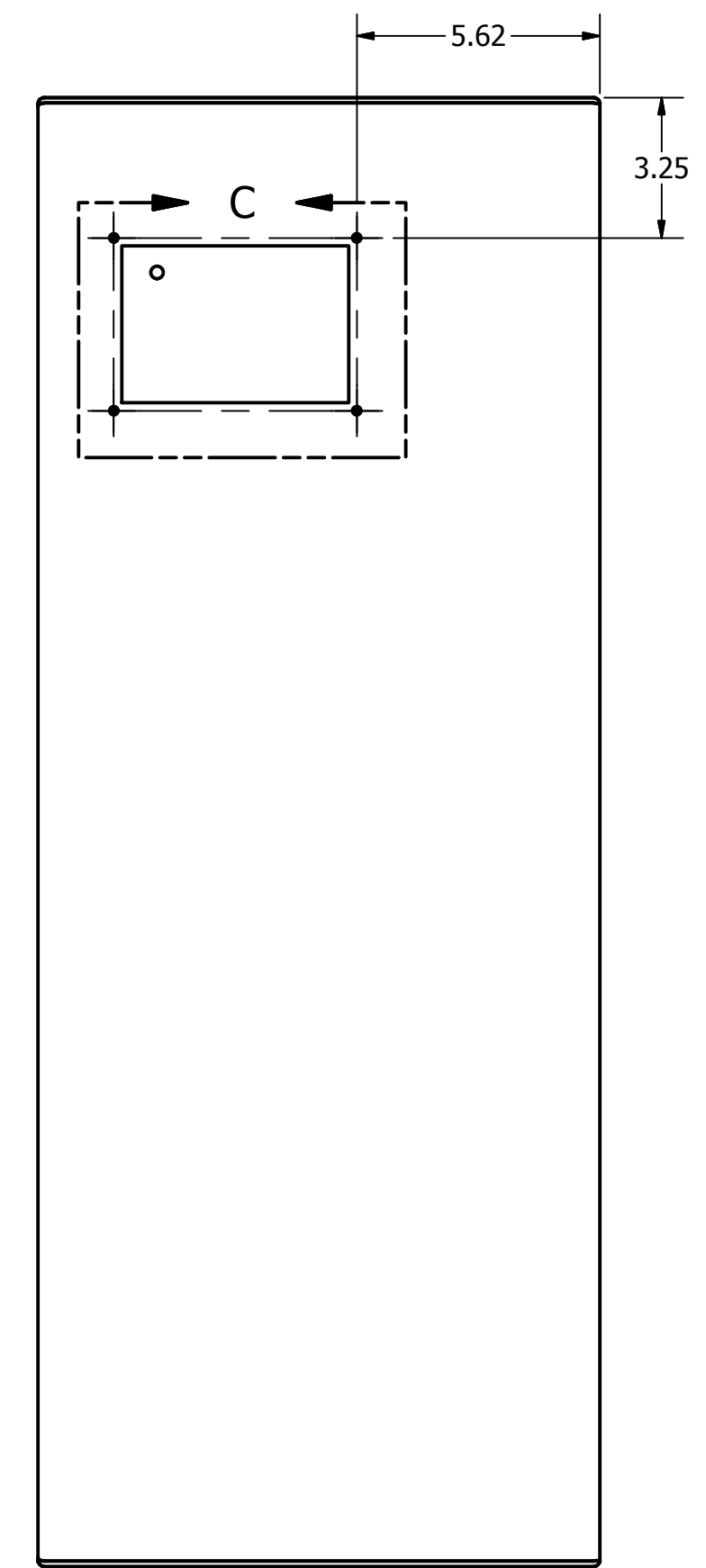
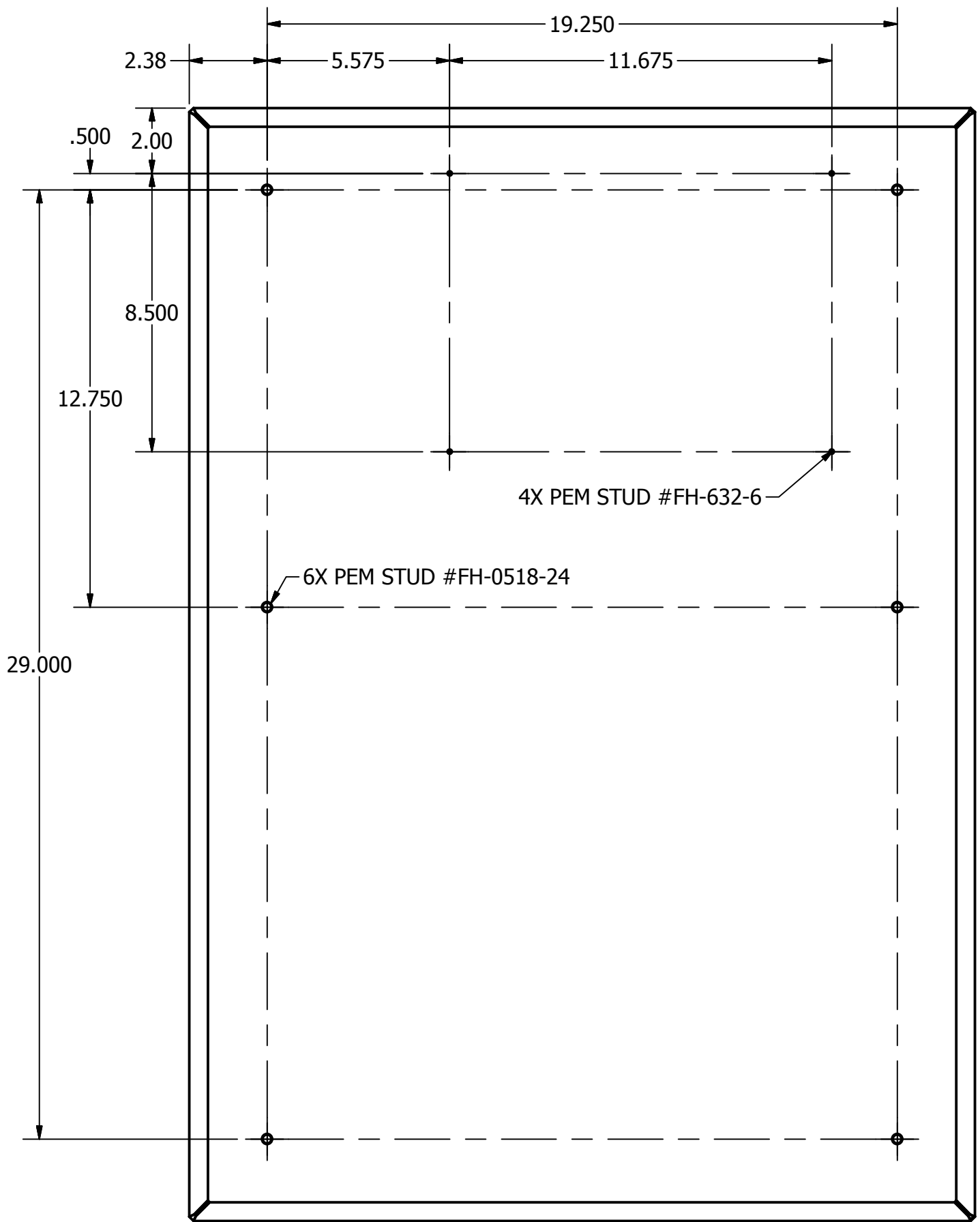
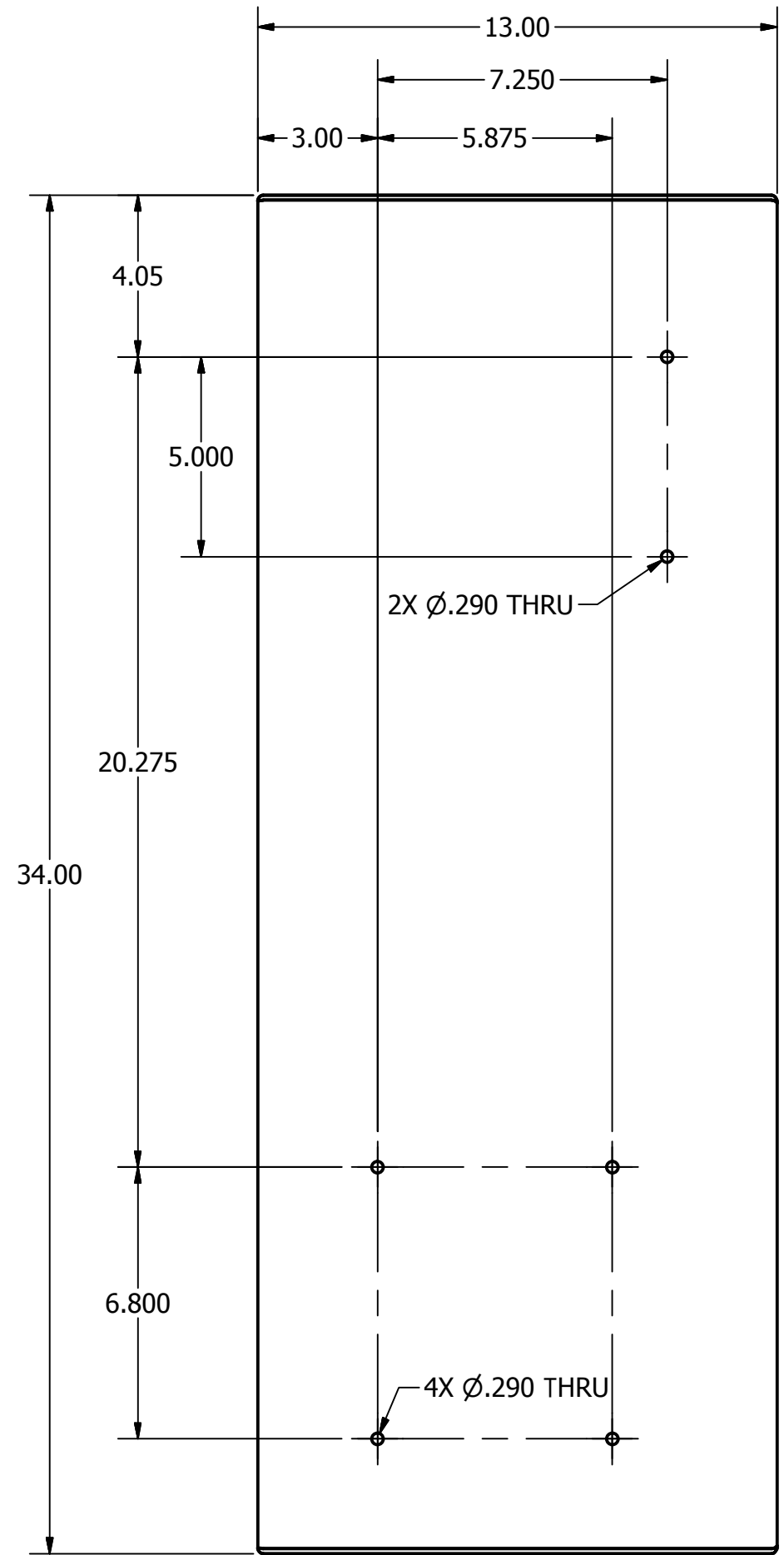
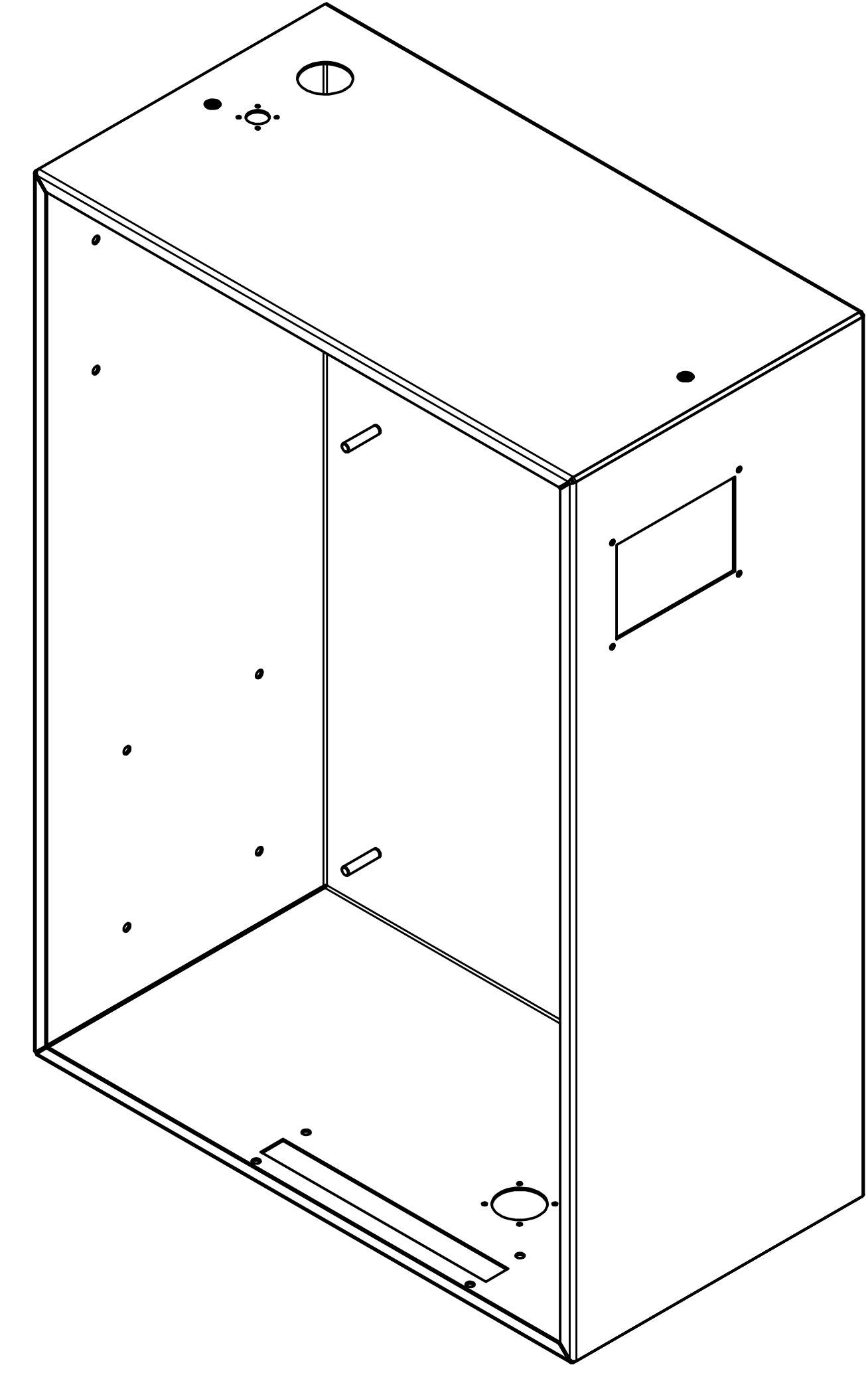


DRAWING #: D00028
REV: B

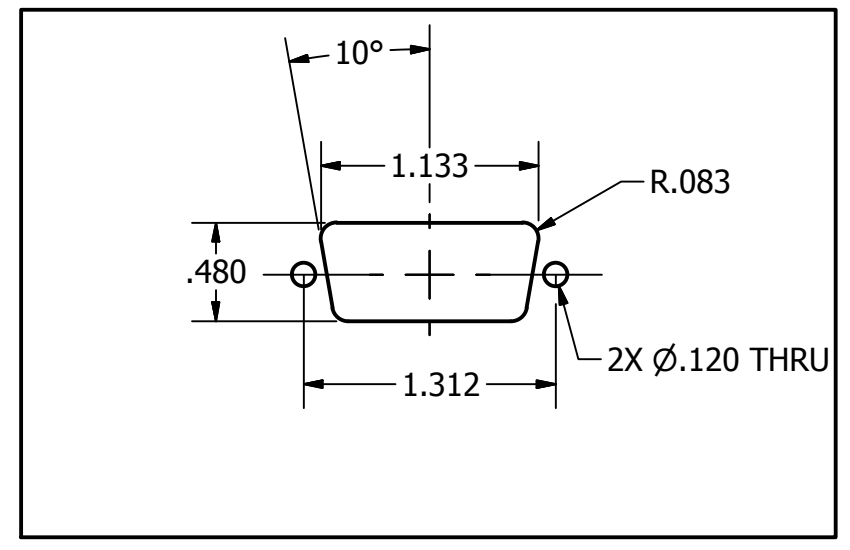
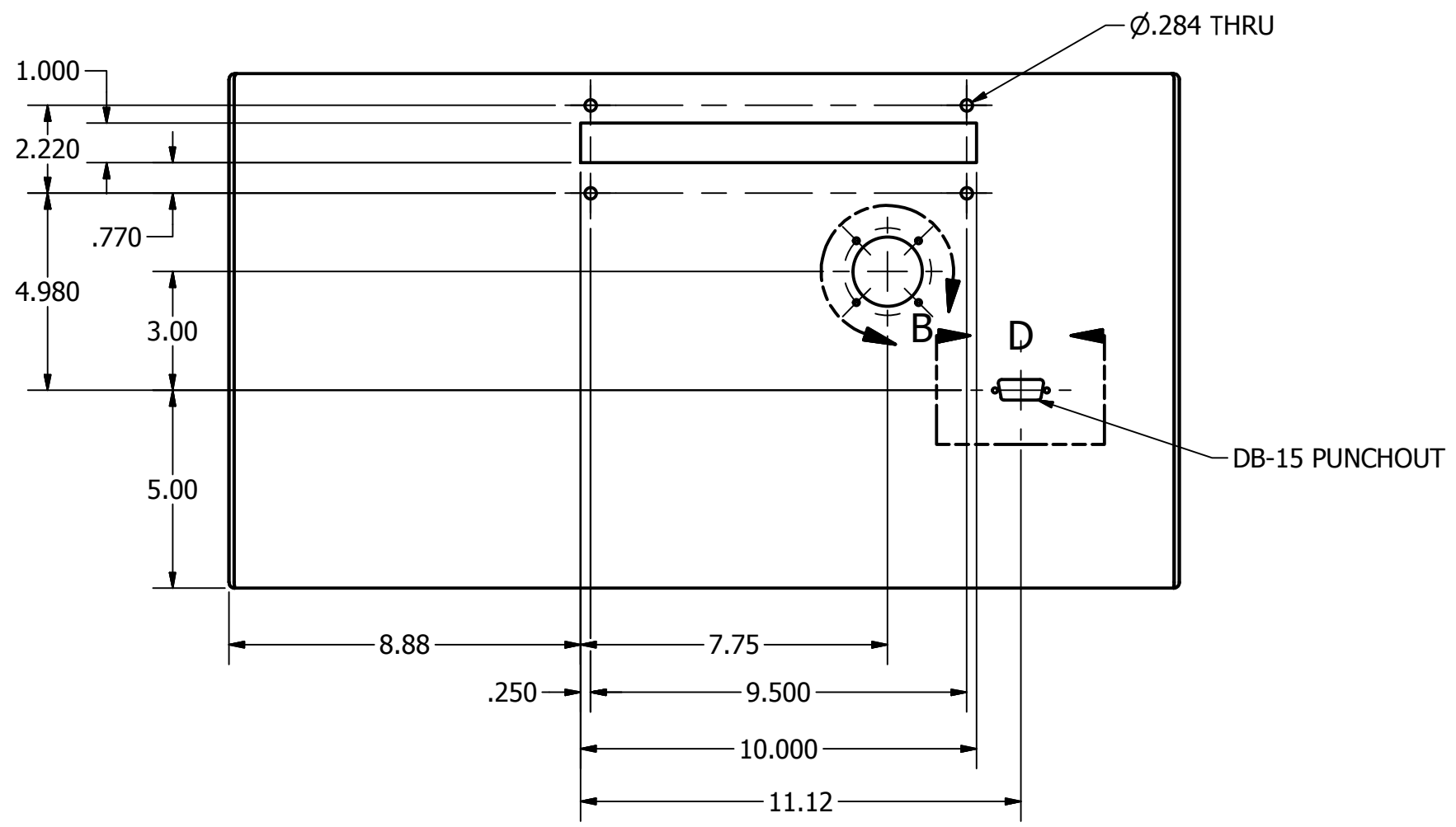
REVISION HISTORY				
REV	ZONE	DESCRIPTION	DATE	APPROVED
A		INITIAL RELEASE	4/9/13	RPE
B	C5	MOVED FH-632-2 STUDS FOR CLEARANCE	6/14/13	RPE



DETAIL C
SCALE 1 / 2



DETAIL B
SCALE 1:1



DETAIL D
SCALE 1 : 1

- NOTES:
 1. PART# 4552, BARCODE- C48548.
 2. MATERIAL TO BE 14 GA (0.0747) H.R. STEEL SHEET.
 3. SEAM LOCATION IS UP TO MANUFACTURER'S DISCRETION.
 4. MINIMUM BEND RADII ALLOWABLE ON ALL BENDS.
 5. FINISH TO BE TIGER DRYLAC RAL 7012 "BASALT GREY."
 6. DRAWING REPLACES 06-03004

CENTROID CORPORATION			
TEL: (814)353-9290 FAX: (814)353-9265 WWW.CENTROIDCNC.COM			
DRAWN: SZP	TITLE: UNI-BOX, SMALL	SHEET #: 1 OF 1	
APPROVED: RPE	ASSEMBLY: D00028	MATERIAL: 14 GAUGE HRPO	FINISH: POWDER COATED
TOLERANCES: X ± 0.025	0' ± 30'	PRODUCT: D00028	REV: B
XX ± 0.010	0.0' ± 3'	DRAWING #:	
XXX ± 0.005			
XXXX ± 0.0005			