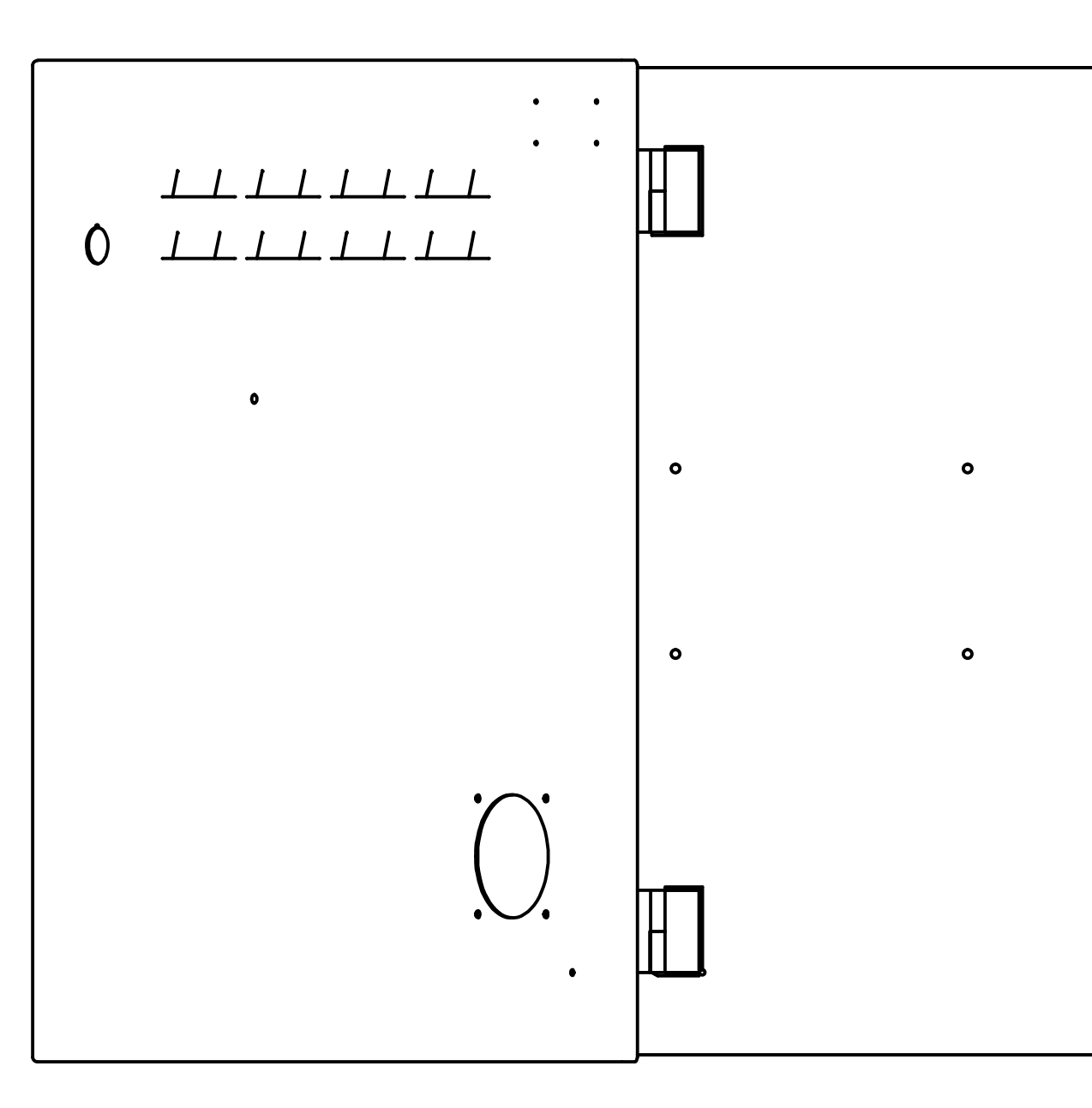
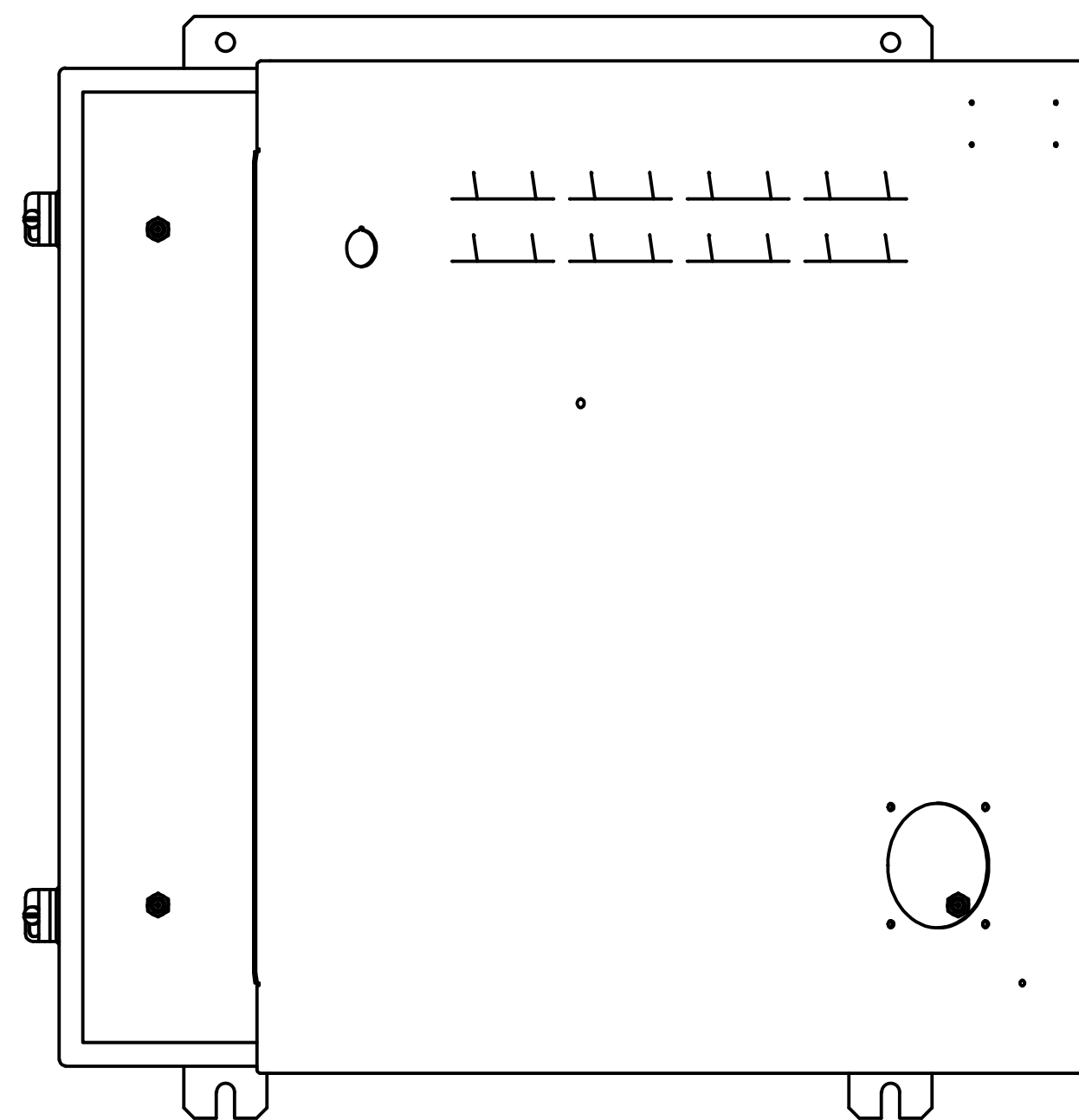
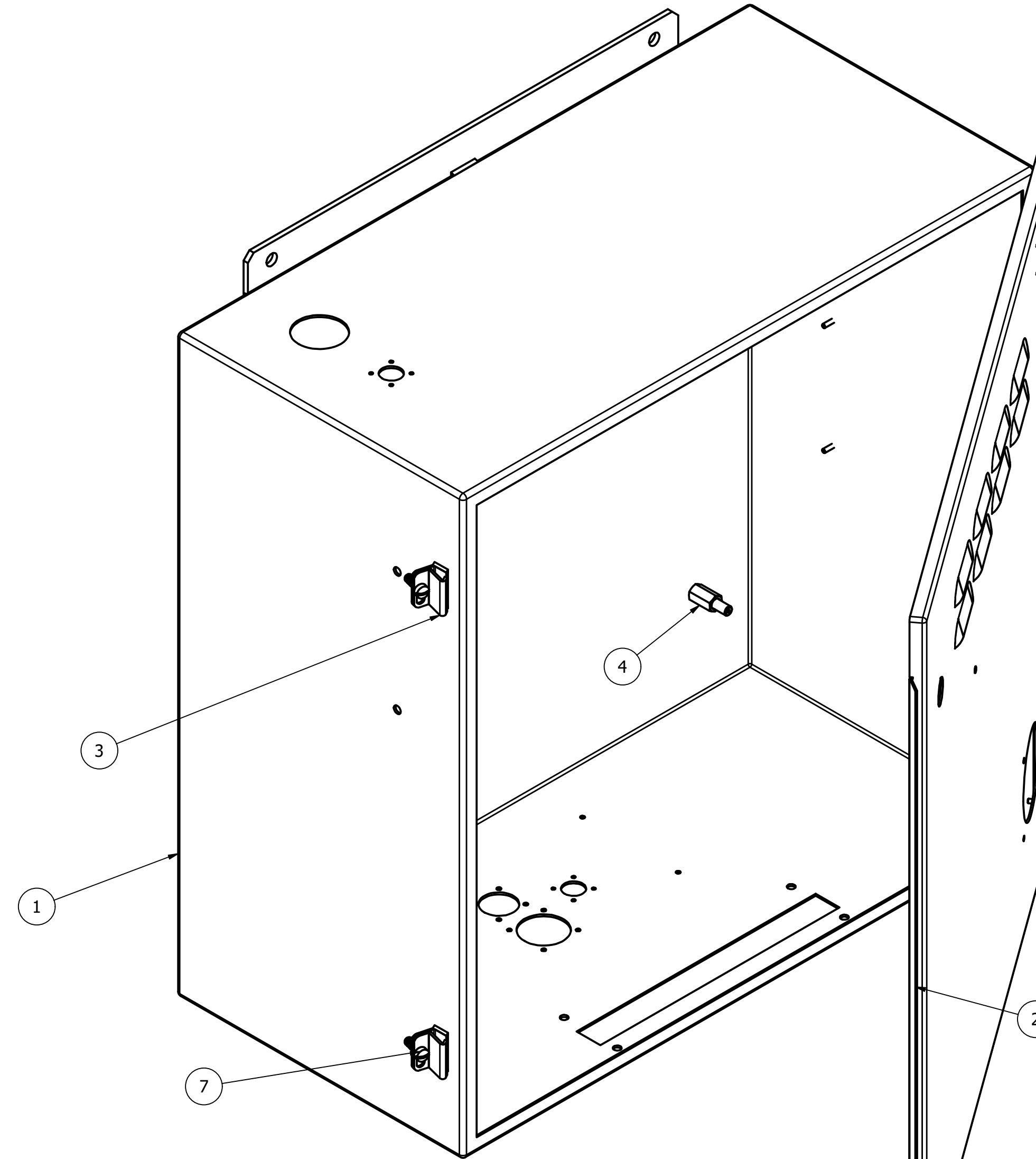
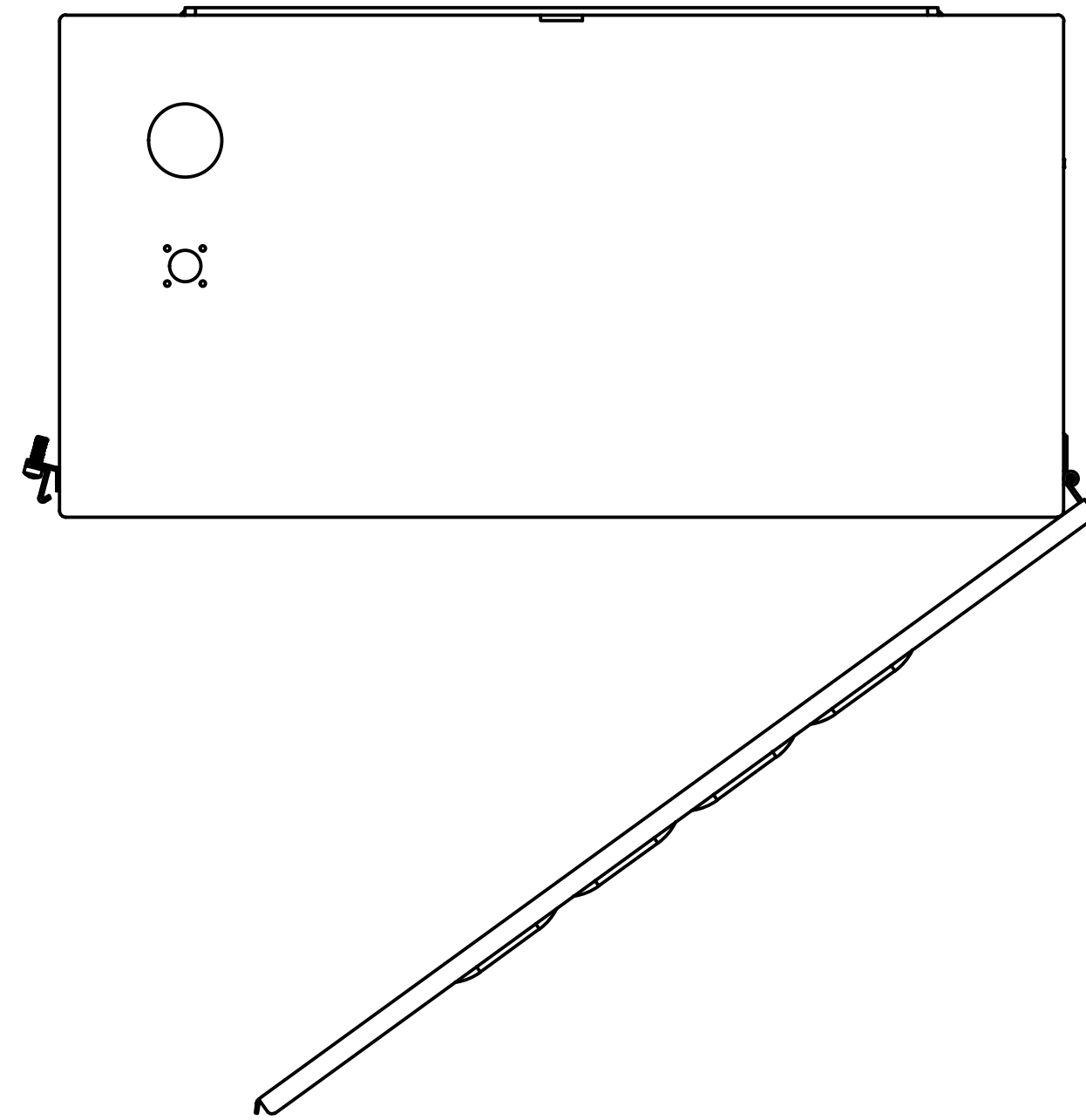


REVISION HISTORY				
ZONE	REV	DESCRIPTION	DATE	APPROVED
	A	INITIAL RELEASE	4/20/2015	
	B	CHANGED HINGE FROM PIANO TO LIFT-OFF	4/23/2015	MJS
	C	MADE CABINET WIDER AND DEEPER FOR S SYSTEMS	4/23/2015	MJS
	D	MOVED STRAIN RELIEF TO CENTER	4/28/2015	MJS
	E	ADDED POWER SWITCH HOLE, ADDED HOLES FOR DISCONNECT, REMOVED ONE ROW OF LOUVERS	4/28/2015	MJS
A7, D6, B3, SHT2, B3 SHT3	F	ADDED THREE .150 DIA HOLES, ADDED FOUR 6-32 PEM STUDS, ADDED FOUR .137 DIA HOLES FOR 6-32 PEM STUDS, ADDED .150 DIA HOLE ON DOOR FOR 6-32 PEM STUD	3/2/2017	MJS
	4	CHANGED TO NUMERICAL REVISION	5/24/2017	MJS
	5	.75 DIA HOLES ON TOP AND BOTTOM OF ENCLOSURE WERE .84	7/9/2018	
	6	ADDED NOTES AND UPDATED TITLE BLOCK	3/12/2019	MCG



PARTS LIST				
ITEM	QTY	PART NUMBER	DESCRIPTION	
1	1	D00440	Weldment, Cabinet, M15 Upgrade-S System	
2	1	D00440	Weldment, Door, Cabinet, M15 Upgrade-S System	
3	2	D00516	Latch, Cabinet, Electrical	
4	4	McMaster 90264A445	Nut, Coupling, 5/16"x18, 7/8" Long, Zinc Plated, Stand-Off	
7	2	McMaster 91794A559	Screw, Machine, 1/4"-28, 3/4" Long, Fillister Head, High-Profile	

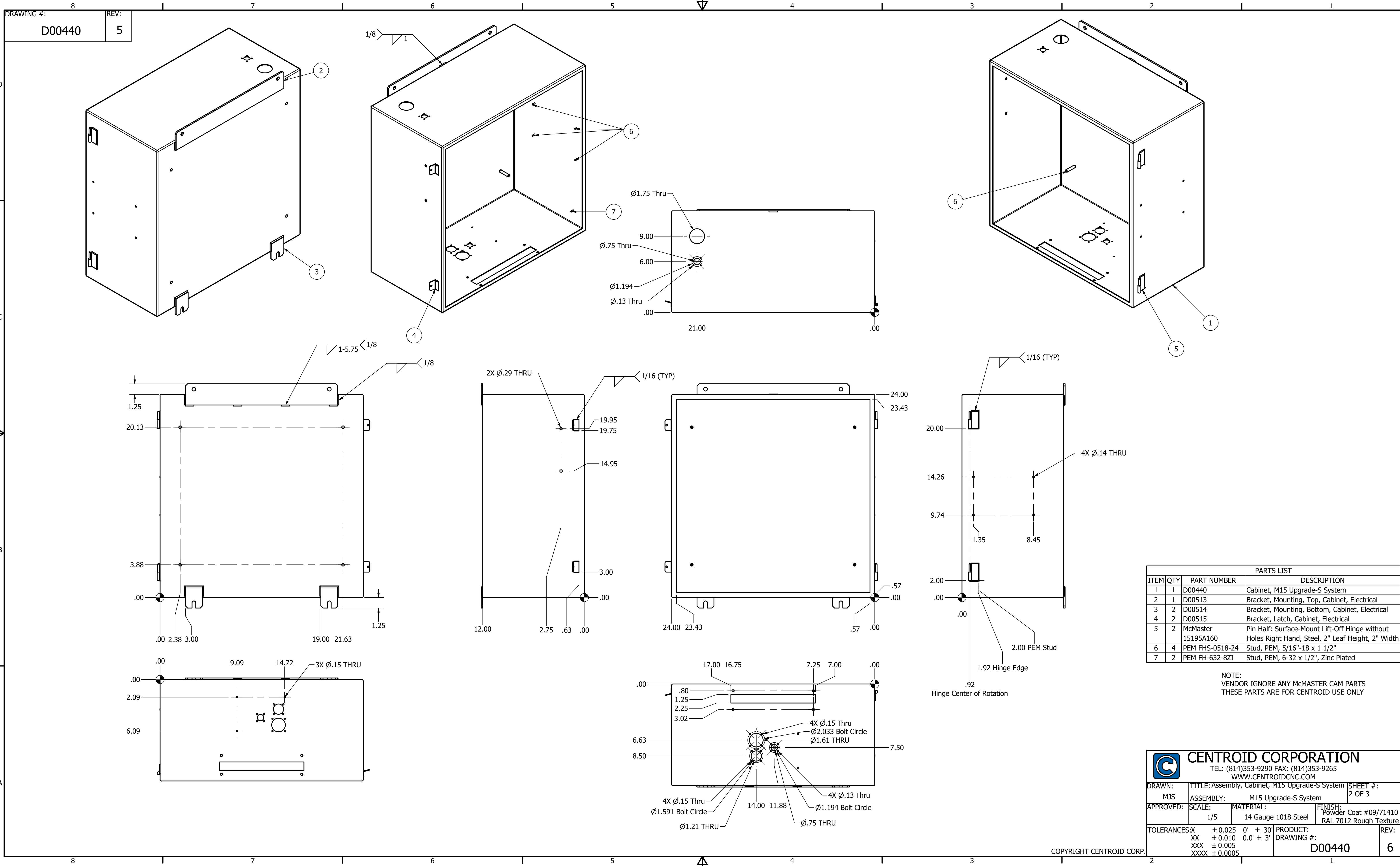
NOTE:  
VENDOR IGNORE ANY McMASTER CAM PARTS  
THESE PARTS ARE FOR CENTROID USE ONLY

TOLERANCES:		
X	± 0.025	0° ± 30'
XX	± 0.010	0.0° ± 3'
XXX	± 0.005	
XXXX	± 0.0005	

PROPRIETARY AND CONFIDENTIAL  
THE INFORMATION CONTAINED IN THIS DOCUMENT IS THE SOLE PROPERTY OF CENTROID CORPORATION. ANY REPRODUCTION AS A WHOLE OR IN PART WITHOUT THE EXPRESS WRITTEN PERMISSION OF CENTROID CORPORATION IS STRICTLY FORBIDDEN.



THIRD ANGLE PROJECTION		TITLE: Assembly, Cabinet, M15 Upgrade-S System	
ASSEMBLY: M15 UPGRADE S- SYSTEM		MATERIAL: SEE OTHER DRAWINGS	
PRODUCT:		FINISH: SEE OTHER DRAWINGS	
DRAWN: MJS		APPROVED: MJS	
BARCODE:		PART #: 6980	
DRAWING #: D00440		REV: 6	
SIZE: D		WEIGHT: N/A	
SCALE: 1:4		SHEET #: 1 OF 3	



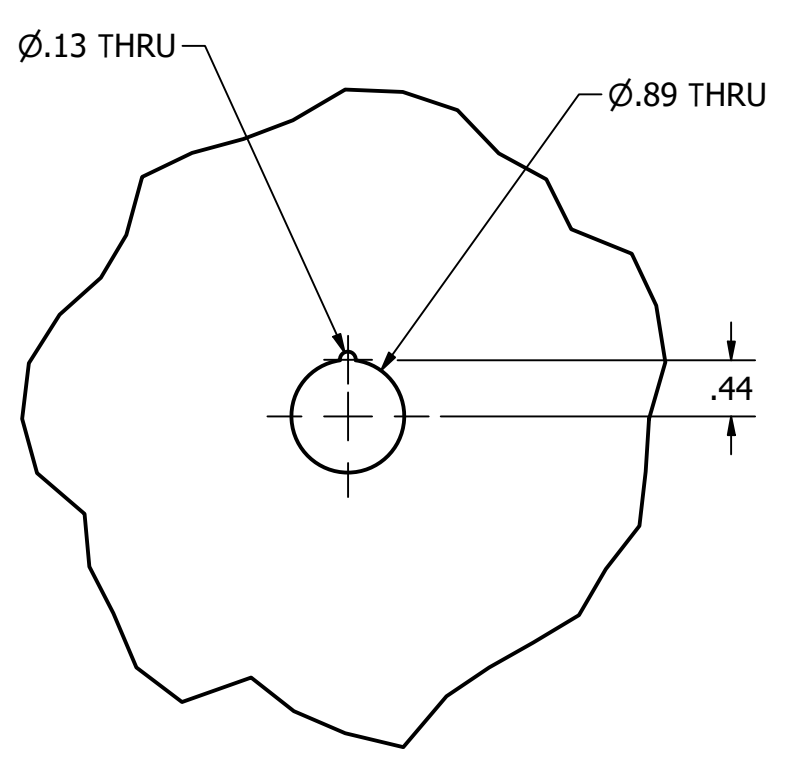
PARTS LIST			
ITEM	QTY	PART NUMBER	DESCRIPTION
1	1	D00440	Cabinet, M15 Upgrade-S System
2	1	D00513	Bracket, Mounting, Top, Cabinet, Electrical
3	2	D00514	Bracket, Mounting, Bottom, Cabinet, Electrical
4	2	D00515	Bracket, Latch, Cabinet, Electrical
5	2	McMaster 15195A160	Pin Half: Surface-Mount Lift-Off Hinge without Holes Right Hand, Steel, 2" Leaf Height, 2" Width
6	4	PEM FHS-0518-24	Stud, PEM, 5/16"-18 x 1 1/2"
7	2	PEM FH-632-8ZI	Stud, PEM, 6-32 x 1/2", Zinc Plated

NOTE:  
VENDOR IGNORE ANY McMASTER CAM PARTS  
THESE PARTS ARE FOR CENTROID USE ONLY

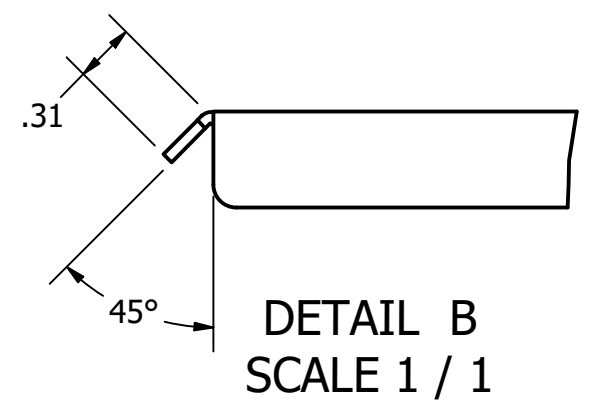
**CENTROID CORPORATION**  
 TEL: (814)353-9290 FAX: (814)353-9265  
 WWW.CENTROIDCNC.COM

DRAWN: MJS	TITLE: Assembly, Cabinet, M15 Upgrade-S System	SHEET #: 2 OF 3
APPROVED:	ASSEMBLY: M15 Upgrade-S System	FINISH: Powder Coat #09/71410
SCALE: 1/5	MATERIAL: 14 Gauge 1018 Steel	PRODUCT: RAL 7012 Rough Texture
TOLERANCES: X ± 0.025 0' ± 30'	PRODUCT: RAL 7012 Rough Texture	REV: 6
XX ± 0.010 0.0' ± 3'	DRAWING #: D00440	
XXX ± 0.005		
XXXX ± 0.0005		

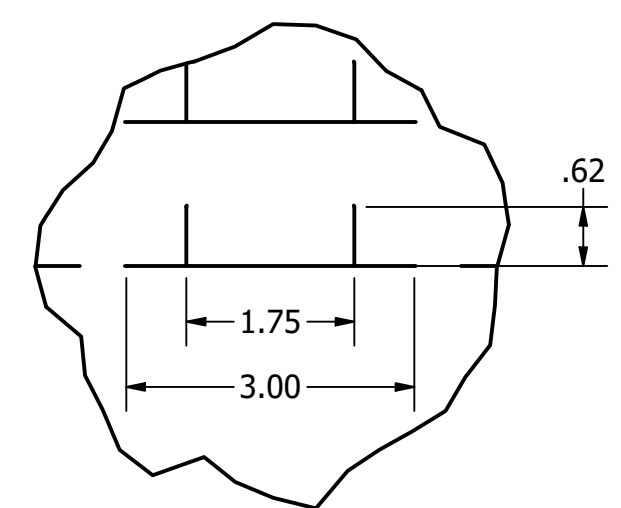
RIGHTS RESERVED © 2005 CENTROID CORPORATION



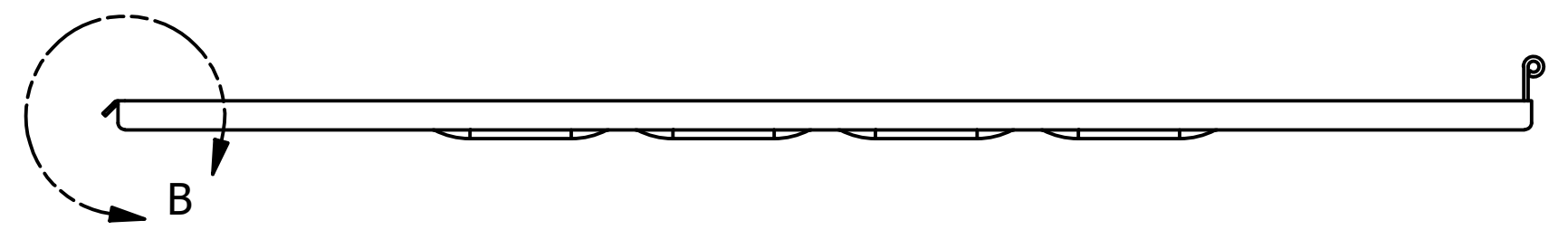
DETAIL F  
SCALE 2 / 3



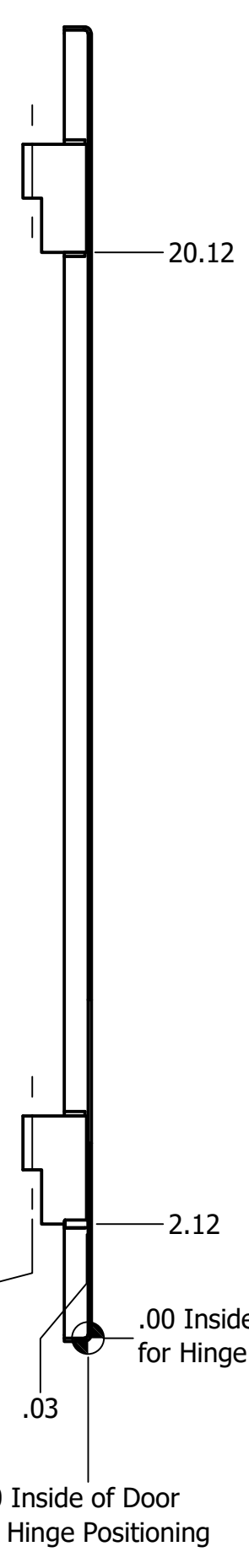
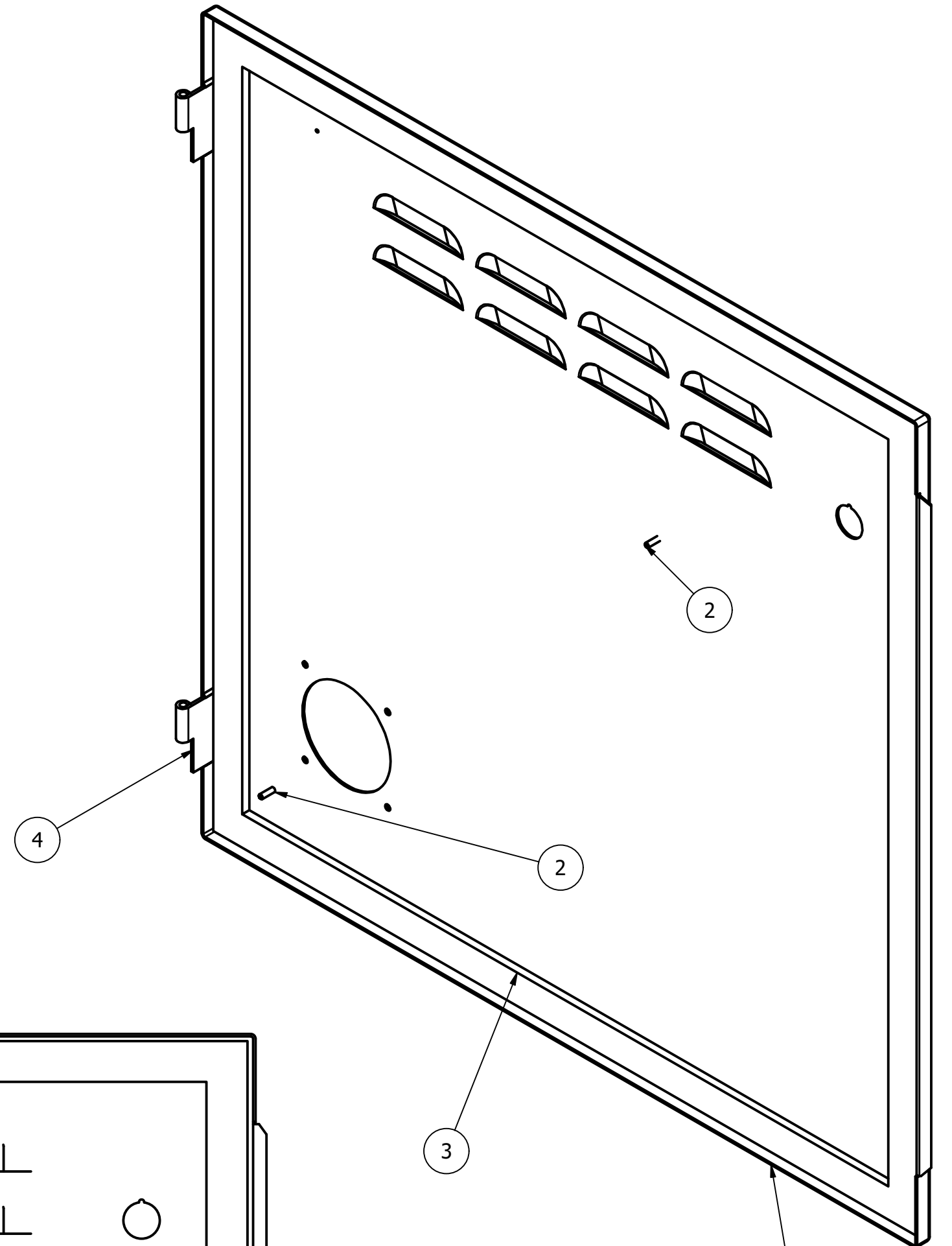
DETAIL B  
SCALE 1 / 1



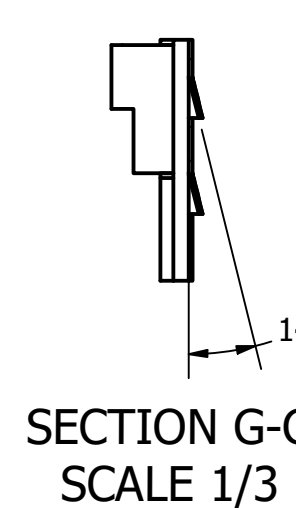
DETAIL C  
SCALE 1 / 2



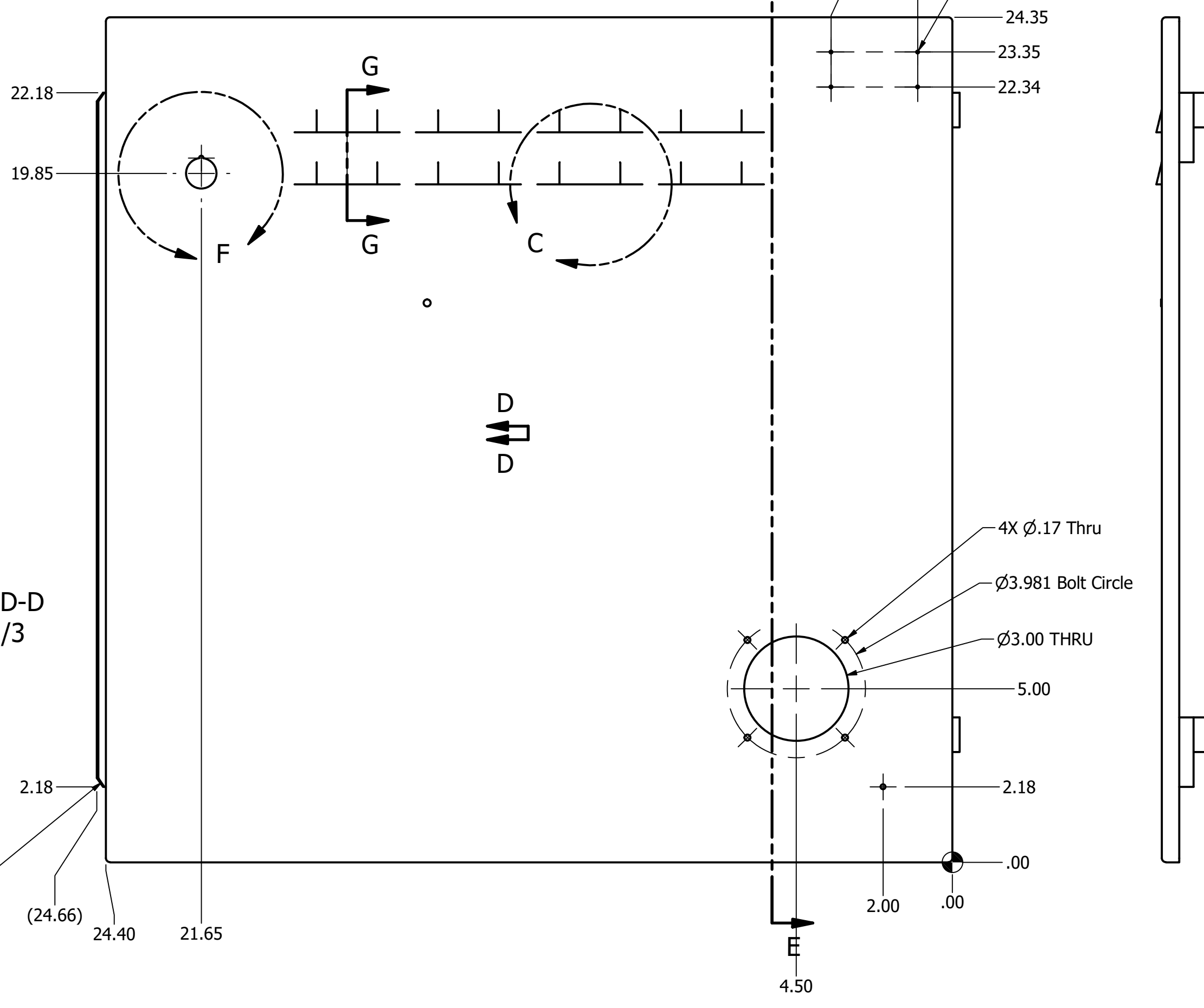
B



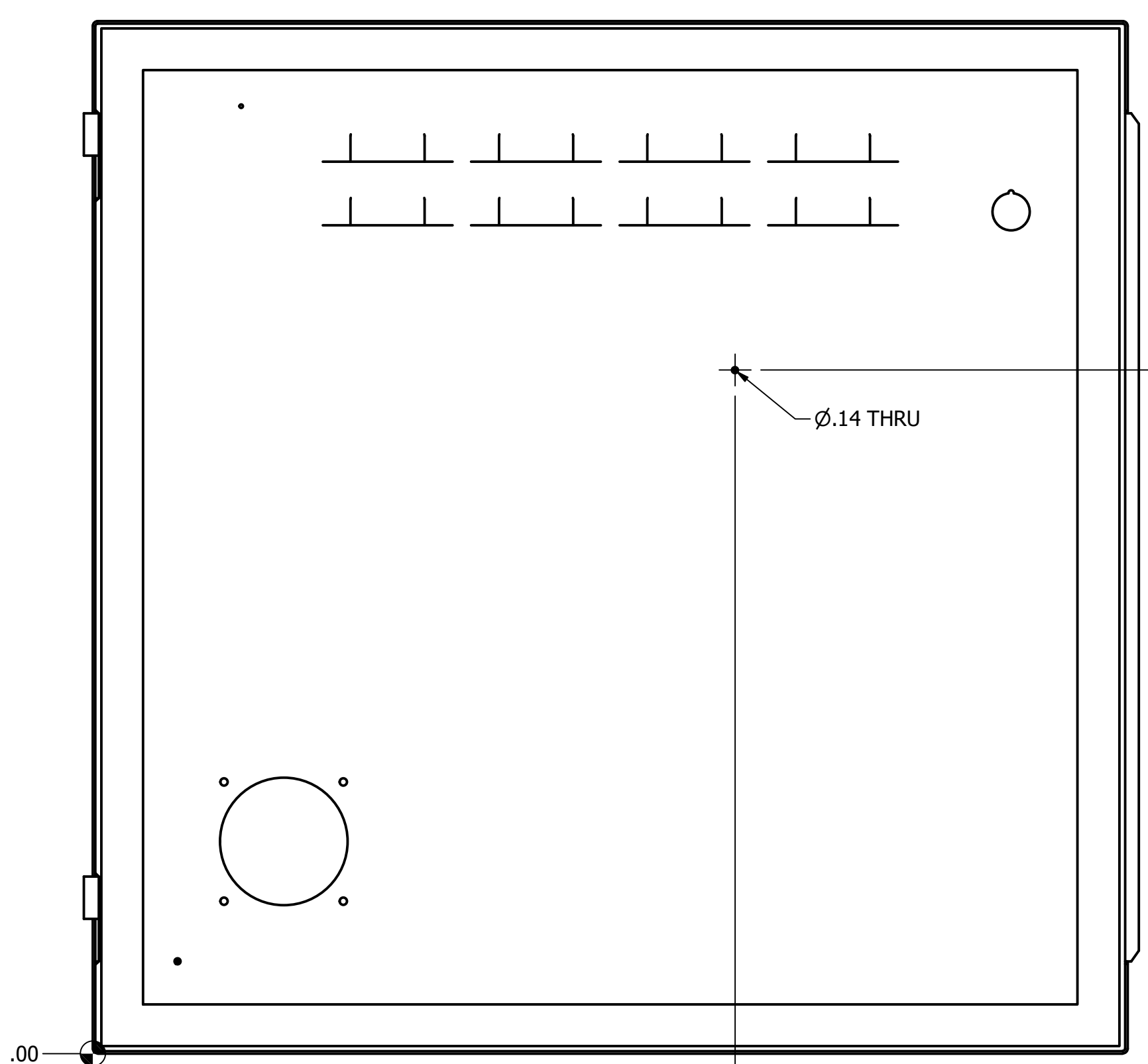
SECTION E-E  
SCALE 1/3  
Shown with Gasket  
Removed for Clarity



SECTION G-G  
SCALE 1/3



SECTION D-D  
SCALE 1/3



PARTS LIST			
ITEM	QTY	PART NUMBER	DESCRIPTION
1	1	D00440	Door, Cabinet, M15 Upgrade-S System
2	2	PEM FH-632-8ZI	Stud, PEM, 6-32 x 1/2", Zinc Plated
3	1	McMaster 8694K78	Weather-Resistant Neoprene/EPDM/SBR Foam Adhesive-Back, 1/4" Thick, 1" Wide
4	2	McMaster 15195A160	Hole Half: Surface-Mount Lift-Off Hinge without Holes Right Hand, Steel, 2" Leaf Height, 2" Width

NOTE:  
VENDOR IGNORE ANY McMASTER CAM PARTS  
THESE PARTS ARE FOR CENTROID USE ONLY

**CENTROID CORPORATION**  
 TEL: (814)353-9290 FAX: (814)353-9265  
 WWW.CENTROIDCNC.COM

DRAWN: MJS	TITLE: Assembly, Cabinet, M15 Upgrade-S System	SHEET #: 3 OF 3
APPROVED:	ASSEMBLY: M15 Upgrade-S System	FINISH: Powder Coat #09/71410
SCALE: 1:3	MATERIAL: 16 Gauge 1018 Steel	PRODUCT: RAL 7012 Rough Texture
TOLERANCES: X ± 0.025 0' ± 30'	PRODUCT: RAL 7012 Rough Texture	REV: 6
XX ± 0.010 0.0' ± 3'	DRAWING #: D00440	
XXX ± 0.005		
XXXX ± 0.0005		