

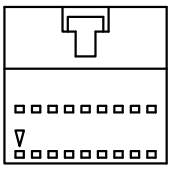
4

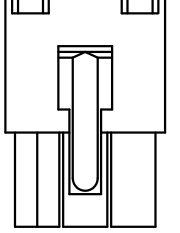
3

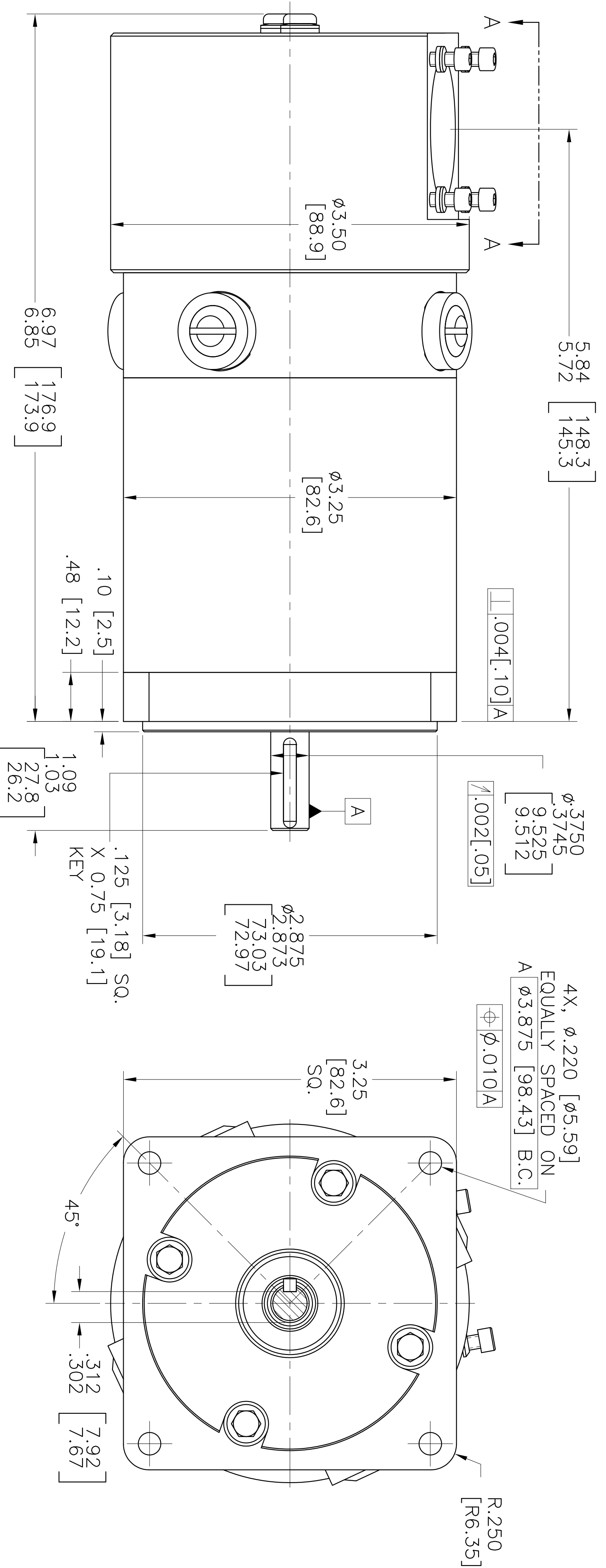
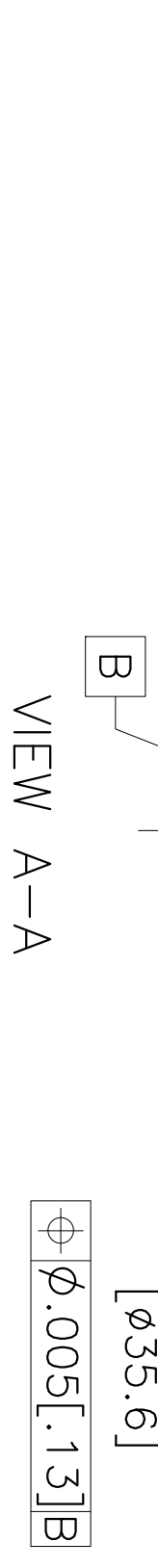
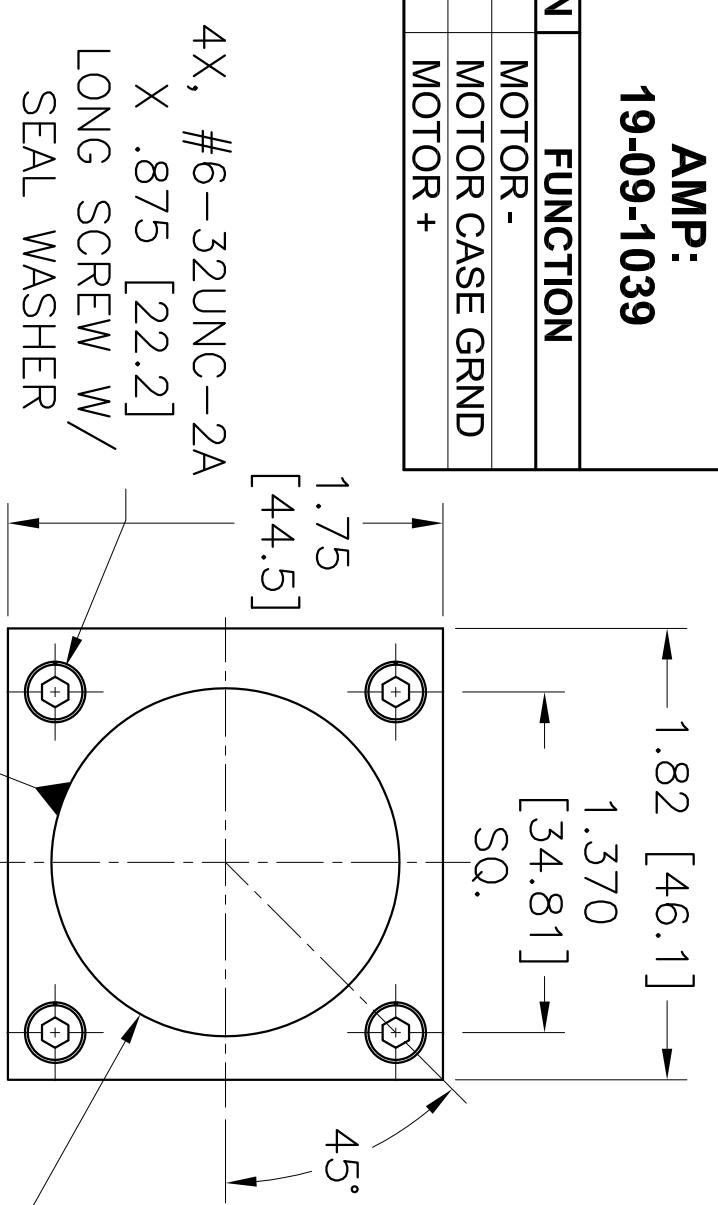
2

1

MOTOR MODEL NO.: GM3320-22	
CONFIG. CODE: GM3320-22-00601811-XXXXA	
MOTOR CONSTANTS	UNITS VALUE
CONTINUOUS STALL TORQUE	IN-LB 7.5
PEAK TORQUE	IN-LB 37.5
TORQUE CONSTANT (K _T)	IN-LB/AMPS 1.70
RA *	OHMS 2.1
INDUCTANCE (L _A) *	MHY 4.0
BEWF *	VOLTS/1000 RPM 22
MAXIMUM SPEED	RPM 3500
INERTIA (J _A)	IN-LB-SEC ² 0.00208
TACHOMETER OUTPUT	VOLTS/1000 RPM -
TACHOMETER RIPPLE	PERCENT -
WEIGHT	LB -

 MOLEX: 5057-9409	
PIN	FUNCTION
1	CHANNEL A+
2	CHANNEL A-
3	CHANNEL B+
4	CHANNEL B-
5	CHANNEL Z+
6	CHANNEL Z-
7	ENCODER +5VDC
8	ENCODER COMMON
9	ENCODER SHIELD

 AMP: 19-09-1039	
PIN	FUNCTION
1	MOTOR -
2	MOTOR CASE GRND
3	MOTOR +



4. SHAFT SEAL REQUIRED
 3. MOTOR FINISH: BLACK.
 2. INCHES [MILLIMETERS].
 1. WITH A POSITIVE VOLTAGE APPLIED TO PIN#3 (RED MOTOR LEAD) WITH RESPECT TO PIN#1 (BLACK MOTOR LEAD), THE MOTOR DRIVE SHAFT WILL TURN IN THE "CW" DIRECTION AS VIEWED FROM THE SHAFT END.
- NOTES: UNLESS OTHERWISE SPECIFIED.

UNLESS OTHERWISE SPECIFIED DIMENSIONS ARE IN INCHES	APPROVAL	DATE
TOLERANCES ARE AS FOLLOWS:	DESIGN BY: M. TAGUPA	25FEB13
DECIMAL: .XX = ±0.01	CHK BY: R.D.M.	25FEB13
ANGULAR: < = ±0.5°	APP BY: R.D.M.	25FEB13
FINISH: 125 / MAXIMUM		

THE INFORMATION CONTAINED WITHIN THIS DOCUMENT WAS ORIGINATED BY AND IS THE EXCLUSIVE PROPERTY OF GLENTEK INC. THIS PROPRIETARY INFORMATION SHALL NOT BE REPRODUCED, TRANSFERRED TO OTHER DOCUMENTS, DISCLOSED TO OTHERS, USED FOR MANUFACTURING OR ANY OTHER PURPOSE WITHOUT PRIOR WRITTEN PERMISSION FROM GLENTEK, INC.

GLENTEK
"Solutions for Motion Control"

208 Standard Street
El Segundo, CA 90245 USA
310.322.3028 FAX 310.322.7709
www.glenetek.com

DRAWING TITLE: **INSTALLATION DRAWING**

SIZE: C	MODEL: GM3320-22	DRAWING NUMBER: XXXX-1	REV: 1
SCALE: 1.375:1	FILE NAME: XXXX-1R1.DWG	SHEET: 1 OF 1	

CONFIGURATION CODE: GM3320-22-00601811-XXXXA